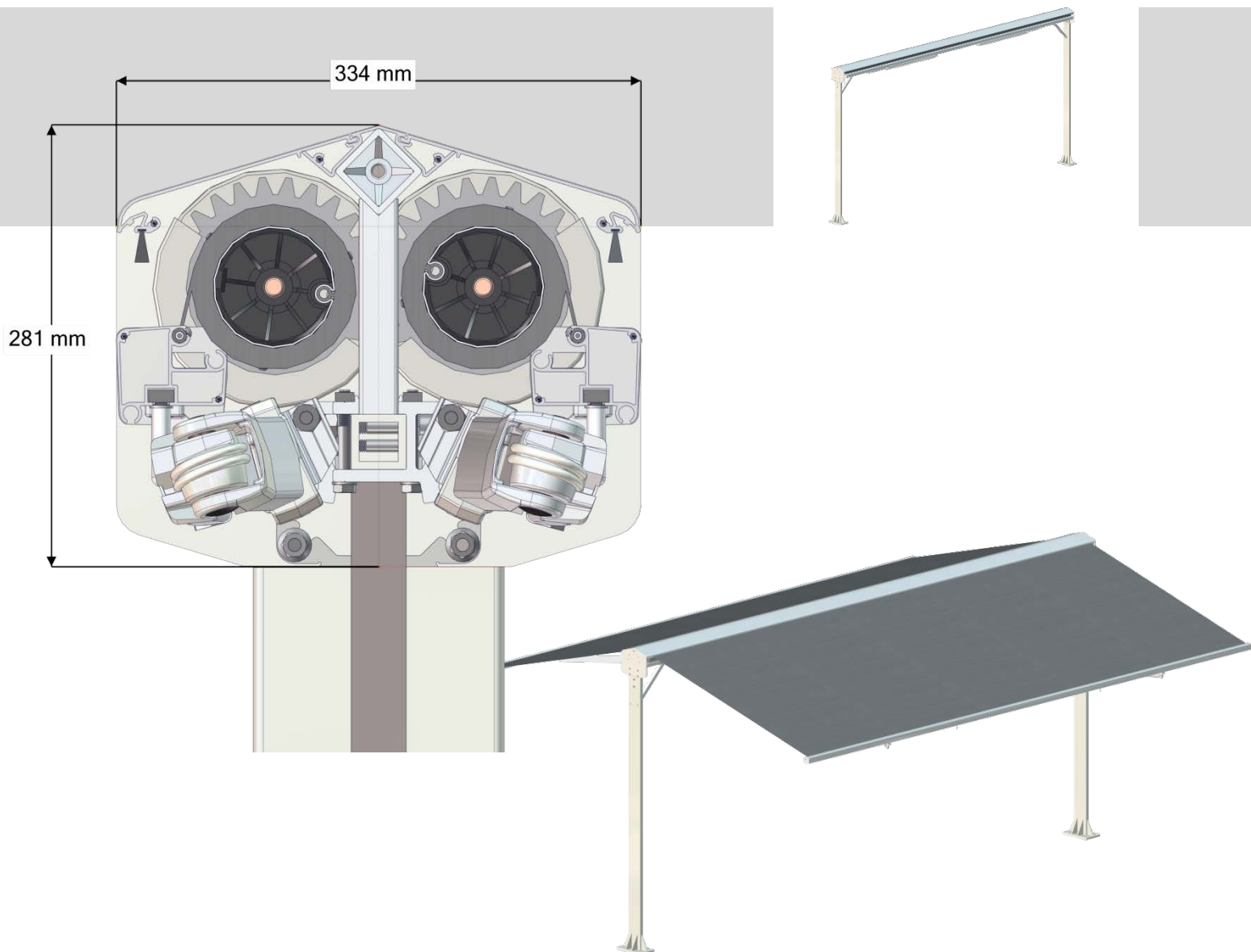


Manufacturing and installation instruction

Twins[®]

Exclusive

Butterfly awning free-standing





**** ATTENTION ****

AVZ accepts no liability for any errors in this manual, or for any damage or losses resulting from the use thereof.

General information Butterfly awning Twins® Exclusive

Maximum width

600 cm (up to projection 300 cm).

NB: The aluminium support beam must always be shortened on both sides! Take the welded sections into account when determining the width.

Maximum angle

± 35°.

Fabric winding method

Topwise.

Cut sizes

	Gearbox control	ASA motor control	Somfy motor control
Top cover	20 mm	20 mm	20 mm
Cover connector	20 mm	20 mm	20 mm
Fabric roller (1)	88 mm	72 mm	57 mm
Fabric roller (2)	43 mm	43 mm	43 mm
Support beam	20 mm	20 mm	20 mm
Front profile	130 mm	100 mm	100 mm
Fabric	150 mm	150 mm	150 mm

Motor diagram

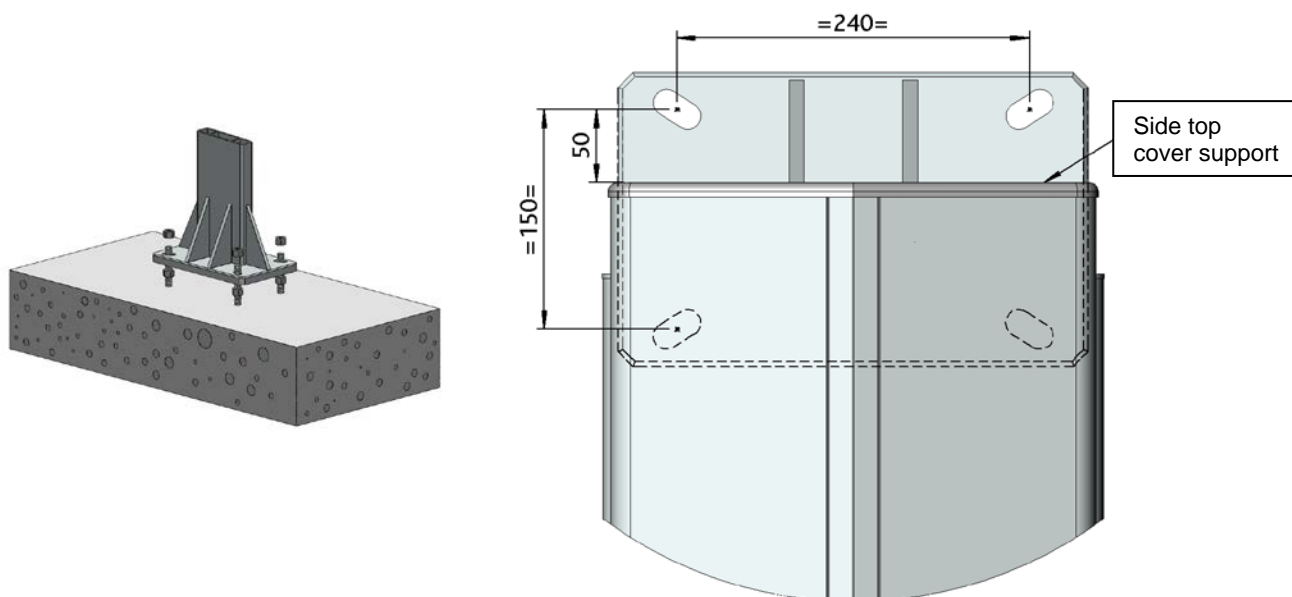
Width	Projection 150 cm	Projection 200 cm	Projection 250 cm	Projection 300 cm
from 200 to 300 cm	50 Nm	60 Nm		
from 301 to 350 cm	50 Nm	60 Nm	80 Nm	
from 351 to 440 cm	50 Nm	60 Nm	80 Nm	100 Nm
from 441 to 490 cm	50 Nm	60 Nm	100 Nm	100 Nm
from 491 to 570 cm	50 Nm	80 Nm	100 Nm	100 Nm
from 571 to 600 cm	60 Nm	80 Nm	100 Nm	100 Nm

Assembly instructions Butterfly awning Twins® Exclusive

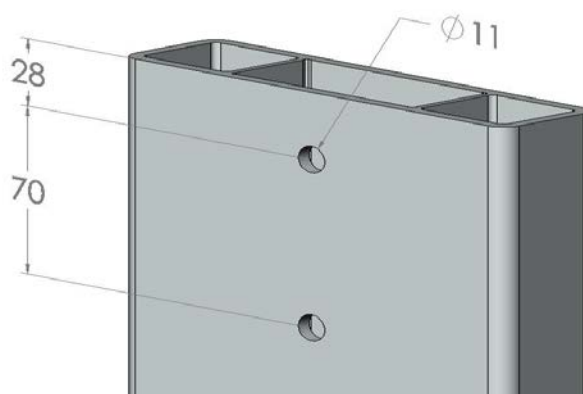
Owing to the weight of the awning (without legs, an awning with a width of 6 m and projection of 2x3 m weighs 160 kg!), we advise you to assemble most of the awning on-site.

1. Pour the concrete foundations. Minimum dimensions: length 140 cm, width 70 cm and height 40 cm. Allow the concrete to cure properly.
2. Drill the holes in the foundation and fix the M16 threaded ends in place (length hole width 18 mm).

(You can also make a mould with which to position the threaded ends before pouring the concrete).



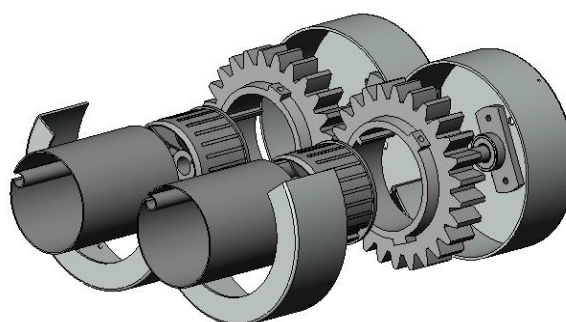
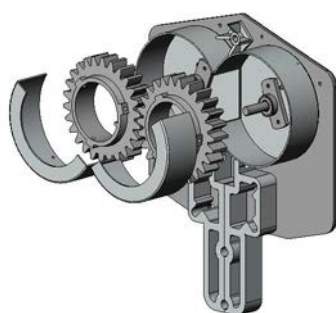
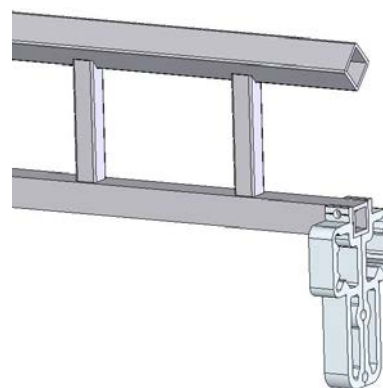
3. Cut the length material to the correct sizes (see the attached list of materials).
4. You determine the height of the legs (total height of the structure is the length of leg + 280 mm).
5. Make holes ($\varnothing 11$ mm) in the top of the leg as shown in the drawing below.



Attention! If water enters in the support, drill a hole in the bottom of it. This to prevent damage from frost.

Assembly instructions Butterfly awning Twins® Exclusive

6. Drill holes with a cross-section of 11 mm in the aluminium support beam (see drawing).
7. Wind the fabrics topwise around the rollers and slide the front profiles on the fabrics.
8. Fasten the fabrics in place with the fabric clamping pads.
9. Slide the front profile connectors into the front profiles and place the cover plates.
10. Remove the front protection caps from the side plate with cogwheels.
11. Remove the cogwheels and plugs with ball bearing and re-fasten the protective caps.
12. Place the cogwheels on the rollers.
13. In case of the roller with controls, place the cogwheel on the side of the tube. At the other roller, place the cogwheel against the fabric so that the position of the fabric roller can still be corrected.
14. Attach the legs to the foundations and make sure they are level.
15. Fasten the cover connector profile on the aluminium support beam and position the entire structure between the side plates.
16. Place the side plates with support beam on the legs and fasten them in place.
17. Fit the arm holders and arms on the support beam at 10 to 12% of the awning width, measured from the sides.
18. Remove the front protective caps from the site plate and remove the bearing pin on the control side.
19. Insert the roller with fabric and front profile with controls over the bearing pin on the cogwheel side. Then lower the structure between the side panels and fasten the controls from the side.
20. In that same way, insert the 2nd roller over the bearing pen and, together with the loose bearing pin, allow it to drop between the side plates. Fasten the bearing pin from the side.
21. Then correct the position of the 2nd upper tube, so that the fabric grooves mirror one another. Fix this position by sliding the cogwheel of the 2nd up to the side, until it is placed immediately opposite the cogwheel on the 1st roller. Thoroughly spray the cogwheels with KwikLube spray grease. Then replace the front protective caps.

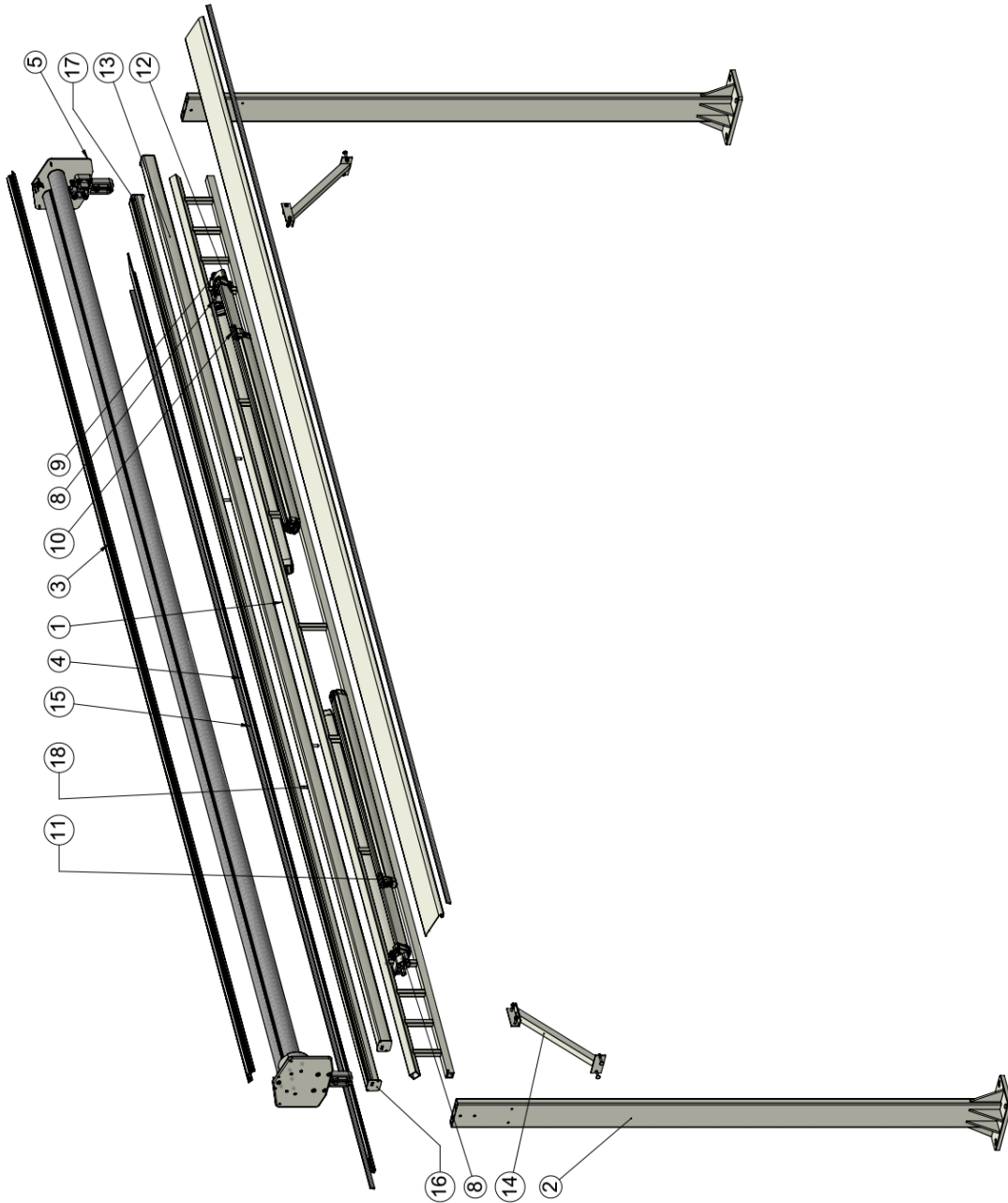


22. Attach the front profiles with the front profile connectors on the arms.
23. Hook the top covers (with brush) in the cover connector profile and screw these against the side plates.
24. Place the strut between the legs and support beam. For this, drill holes with a cross-section of 9 mm and fasten with M8 bolts.
25. Adjust the awning and check that all bolts and screws are well fastened.

Illustration: Butterfly awning Twins® Exclusive

(version with motor is identical, with the exception of the front profile filler piece)

00 000-000-6296-000
 Tekening nummer: 000-000-6296-000
 Revisie: 00



Benaming: Twins® exclusief	Project: ajj	Deur: 05-10-2016	Tekening nummer: 6296-000-000	Revisie: 00
AVZ ALUMINIUM TOEPASSINGEN	Maak: mm	Schaal: 1:100	Formaat: A3	
<small>AVZ is een handelsmerk van AVZ Group B.V. AVZ Group B.V. is een onderdeel van de AVZ Group. AVZ Group B.V. is een onderdeel van de AVZ Group. AVZ Group B.V. is een onderdeel van de AVZ Group.</small>				

List of materials: Butterfly awning Twins® Exclusive
 (version with motor is identical, with the exception of the front profile filler piece)

Piece	Nbr.	Item nbr.	Description
18	4	4000 336	Stopper pin arms
17	2	4210 472	End cap front profile Twins right
16	2	4210 470	End cap front profile Twins left
15	2	4200 260	Bristle for cover Twins
14	2	4216 217	Strut Twins
13	2	6294 305	Front profile Aperta, Twins
12	2	4300 708	Arms M-plus 300 cm left + right
11	2	4210 881	Front profile connector Twins left
10	2	4210 883	Front profile connector Twins right
9	2	4210 422	Arm connector Twins complete right
8	2	4210 420	Arm connector Twins complete left
5	1	4216 190	Side plates kit for Twins
4	2	6295 830	Cover Twins
3	1	6295 810	Cover connector profile Twins
2	2	4216 047	Leg with foot Twins
1	1	4216 140	Support beam for Twins